



CREATION 55  
LOOSELAY

---

**Gerflor**<sup>®</sup>  
theflooringgroup



# CREATION 55

## LOOSELAY

Creation 55 looselay LVT is a luxury vinyl floorcovering available in a choice of natural woods and minerals and contemporary textile designs. The range is available in plank and tile format. Designs can be mixed and matched and can be installed alongside carpet tiles for a coordinated floor scheme. Creation 55 looselay LVT is ideal for medium traffic areas in commercial office, retail and education environments.

### CONTENTS

#### Creation 55 Looselay

Product Construction .....	1
----------------------------	---

#### Colourways

Woods .....	2-5
Textiles .....	6-7
Minerals .....	8-9

#### Commercial Office

Scheme .....	10-11
Floor Plan .....	12-13

#### Installation

Woods .....	14-15
Textiles .....	16
Minerals .....	17

**PRODUCT CONSTRUCTION**



**PUR+ MATT**

Easy maintenance

**4D DESIGN**

**MATT SURFACE**

Natural look

**CRYSTAL WEAR LAYER**

High definition design & colour

**STRUCTURED EMBOSS**

Ultra realistic surface

**MIX & MATCH DESIGNS**

Easy mix & match of designs & formats

**DUO CORE TECHNOLOGY**

**1 RESILIENT COMFORT CORE**

Noise absorption

Soft underfoot

**2 RIGID CORE**

The best stability  
Fibreglass inside

Renovation ceramic  
4 mm joint

**GRIP-WAVE BACKLAYER**

**ANTI-SKID BACKING**

Super strong suction to the subfloor

Air circulation: better acoustics

Humidity circulation: moisture resistance

Easily removable: renovation

100% REACH  
Phthalate free  
(except recycled content)



100% RECYCLABLE  
35% recycled content



TVOC emissions below  
detection level  
(TVOC < 10µg after 28 days)  
No formaldehyde



**Samples**

An accurate colour match can only be achieved by requesting the relevant product sample(s) from Gradus Technical Support on 01625 428922

For more information please refer to Gerflor's installation guidelines



HONEY OAK 0441

WOODS



Looselay

Design Shade Variation:



Light



Medium



TWIST 0504 | LRV 37.0



229 x 1220



LONG BOARD 0455 | LRV 29.8



229 x 1220



HONEY OAK 0441 | LRV 29.8



229 x 1220



BALLERINA 0347 | LRV 25.7



229 x 1220

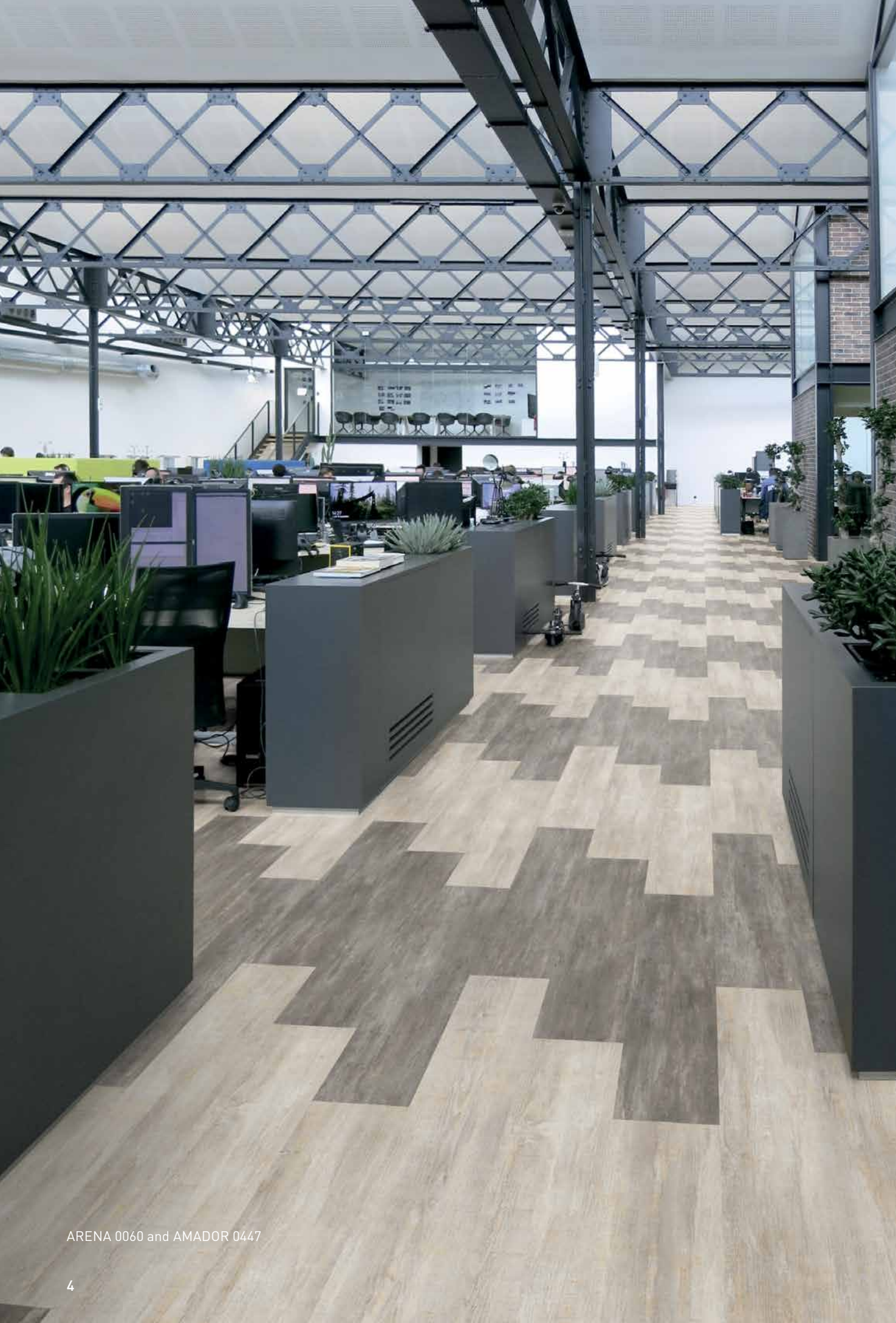


SWISS OAK GOLDEN 0796 | LRV 24.5



229 x 1220





ARENA 0060 and AMADOR 0447

WOODS



Looselay

Design Shade Variation:



Light



Medium



MALUA BAY 0448 | LRV 45.6



229 x 1220



ARENA 0060 | LRV 35.0



229 x 1220



SWISS OAK PEARL 0846 | LRV 37.1



229 x 1220



RANCH 0456 | LRV 27.9



229 x 1220



AMADOR 0447 | LRV 28.2



229 x 1220





PONTO CRUZ NAVY 0876



TEXTILES

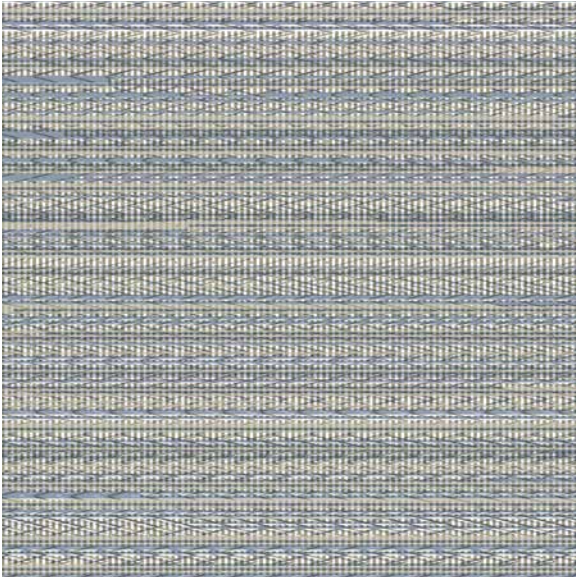


Looselay

Design Shade Variation:



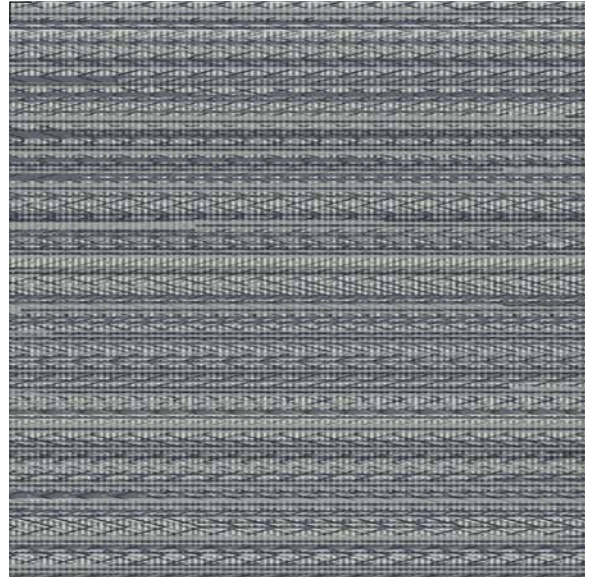
Light



PONTO CRUZ NAVY 0876  
LRV 34.8



500 x 500



PONTO CRUZ CITY 0878  
LRV 26.3



500 x 500





Main floor space - CARMEL 0618, office - RANCH 0456



CARMEL 0618  
LRV 19.2



500 x 500



PARKER STATION 0374  
LRV 11.4



500 x 500



NORWEGIAN STONE 0860  
LRV 10.3

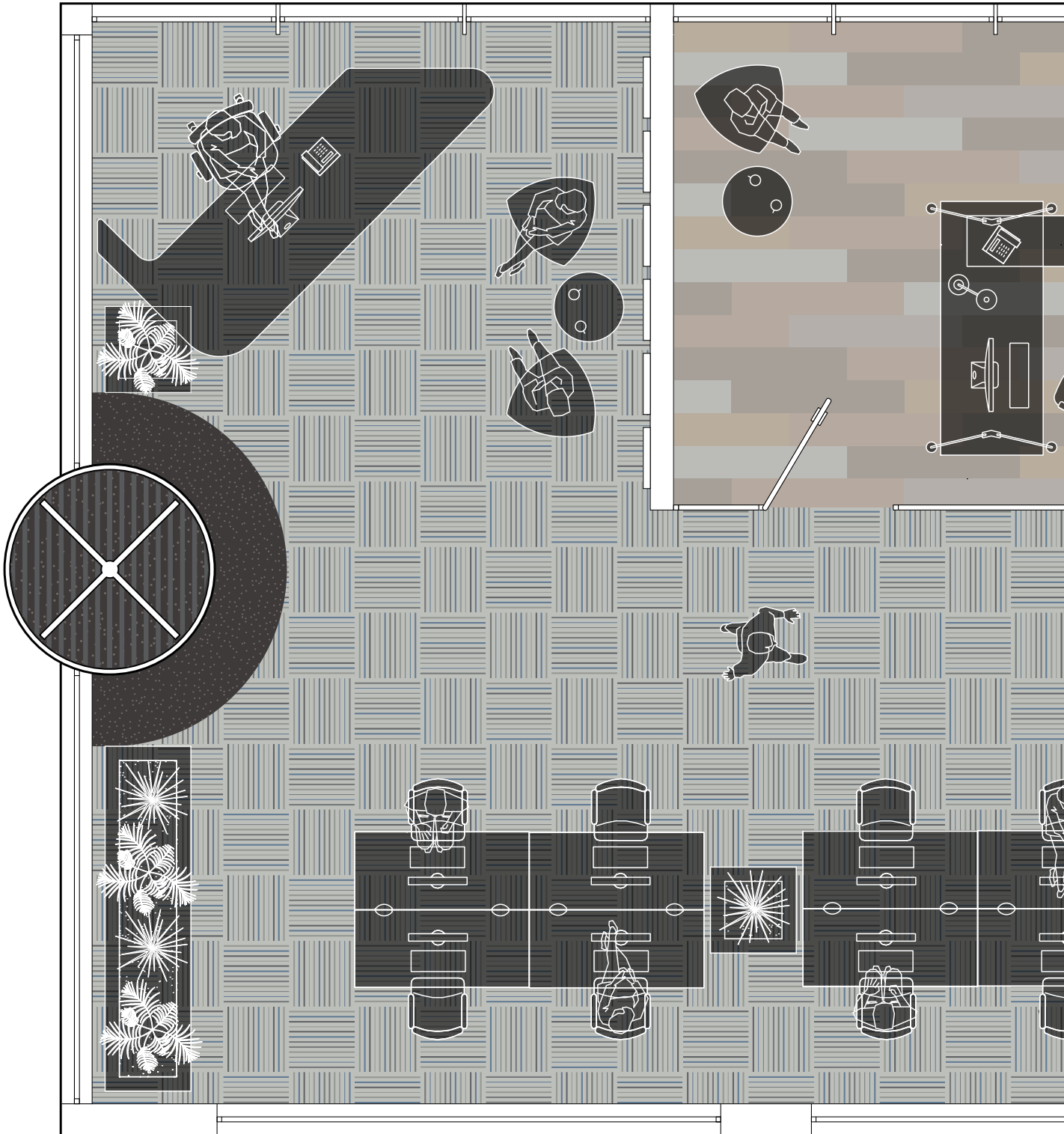


500 x 500

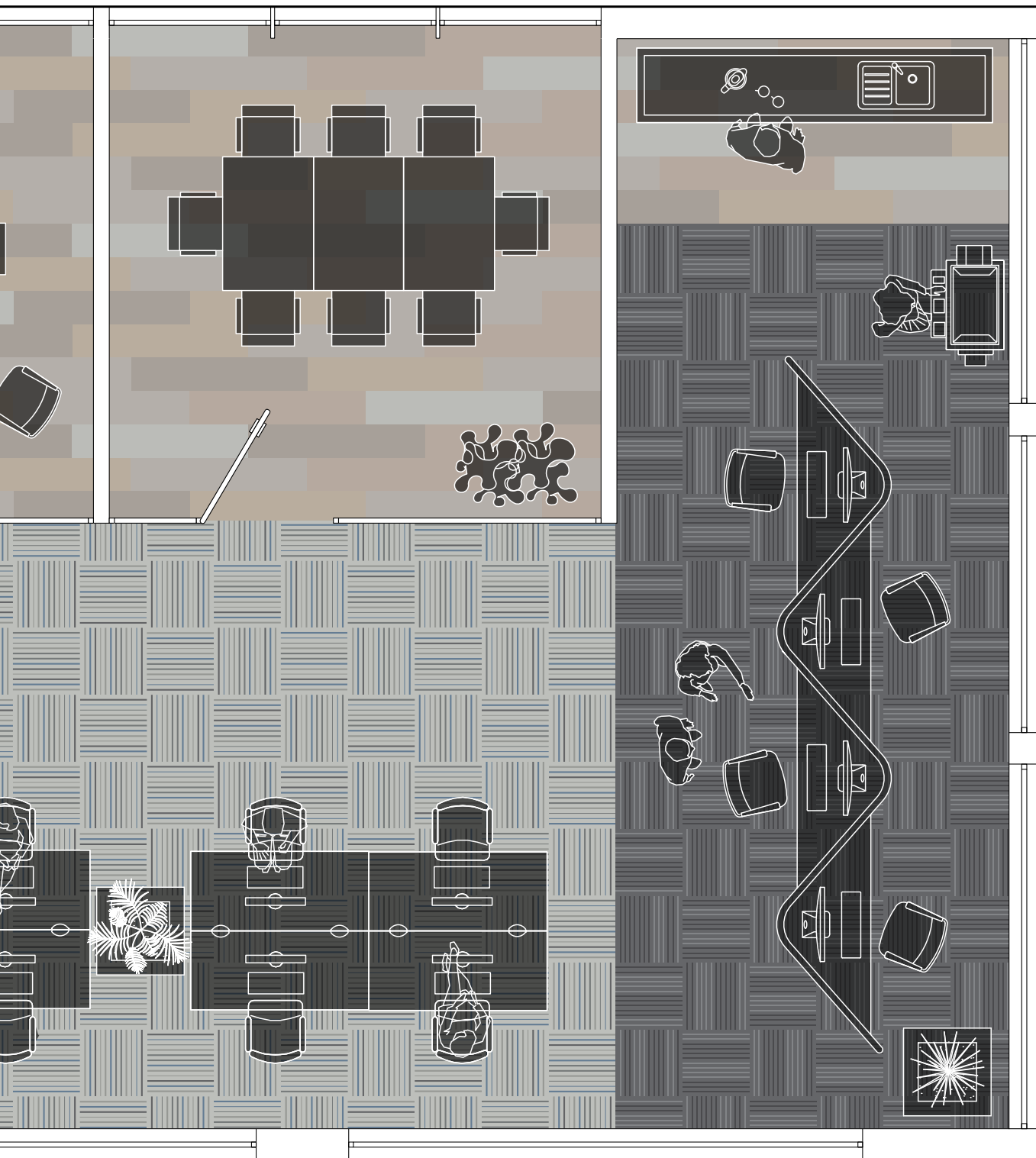








**MIX & MATCH DESIGNS** to transform a space and install alongside carpet tiles to create a unique scheme.



Ponto  
Cruz City  
0878



Ranch  
0456



Gradus  
Urban Myth  
Carpet Tile

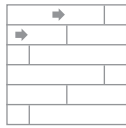


Gradus  
Primary  
Matting



Gradus  
Secondary  
Matting

**WOODS** Recommended Installation



1/3 Drop



HONEY OAK 0441 | LRV 29.8



LONG BOARD 0455 | LRV 29.8







Looselay

229 x 1220 mm

Design Shade Variation:



Light



Medium



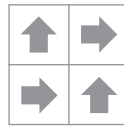
SWISS OAK PEARL 0846 | LRV 37.1



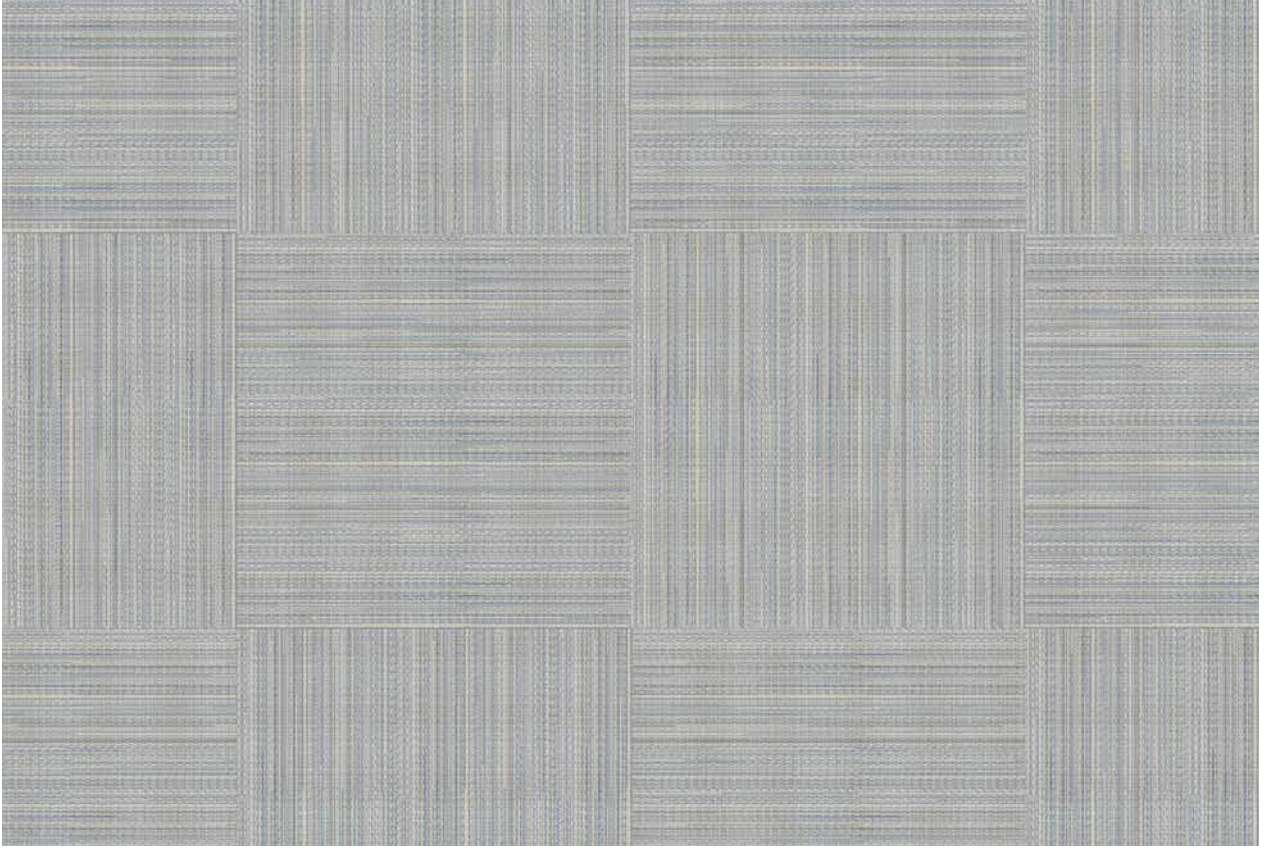
RANCH 0456 | LRV 27.9



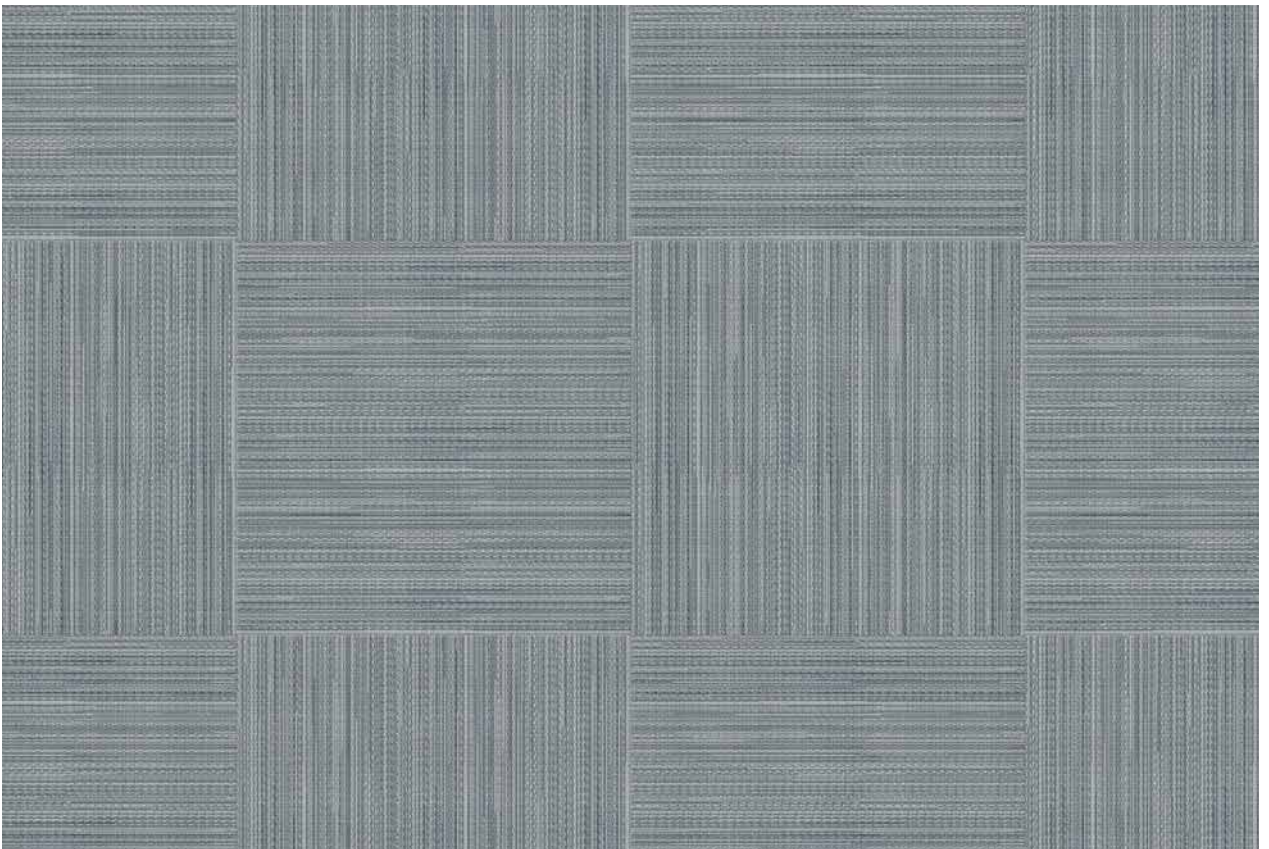
TEXTILES & MINERALS Recommended Installation



Quarter Turn



PONTO CRUZ NAVY 0876 | LRV 34.8



PONTO CRUZ CITY 0878 | LRV 26.3





Looselay

500 x 500mm

Design Shade Variation:



Light



CARMEL 0618 | LRV 19.2



PARKER STATION 0374 | LRV 11.4



# CREATION 55

## LOOSELAY

gerflor.co.uk  
gerflor.ie  
gradus.com

CI/SfB	
(43)	Tn6

### CREATION 55 LOOSELAY

#### DESCRIPTION

Total Thickness	EN ISO 24346 (EN 428)	mm	4.5
Wear Layer Thickness	EN ISO 24340 (EN 429)	mm	0.55
Weight	EN ISO 23997 (EN 430)	g/m <sup>2</sup>	7500
Size	EN ISO 24342 (EN 427)	mm	229 x 1220 / 500 x 500

#### CLASSIFICATION

Norm / Product Specification	-	-	EN ISO 10582 (EN 649)
European Classification	EN ISO 10874 (EN 685)	Class	33-42
Fire Rating	EN 13 501-1	Class	Bfl-s1
Static Electrical Propensity	EN 1815	kV	<2
Slip Resistance Wet (ramp test with oil)	DIN 51130	Class	R10

#### PERFORMANCES

Wear Resistance	EN 660.2	mm <sup>3</sup>	≤2.0
Wear Group	EN 652	group	T
Type Binder Content	ISO 10582	group	I
Dimensional Stability (norm)	EN ISO 23999 (EN 434)	%	≤0.15
Residual Indentation	EN ISO 24343-1 (EN 433)	mm	≤0.10
Impact Sound Insulation	EN ISO 717-2	dB	7
Room Impact	NF S 31074	dB	73
Castor Chair Test	ISO 4918 (EN 425)	-	OK
Thermal Conductivity	EN ISO 10456 (EN 12 524)	W/(m.K)	0.25
Colour Fastness	EN 20 105 - B02	degree	>6
Surface Treatment	-	-	PUR+ Matt
Chemical Products Resistance	EN ISO 26987 (EN 423)	-	OK

#### ENVIRONMENT/INDOOR AIR QUALITY

TVOC after 28 days	ISO 16000-6	µg/m <sup>3</sup>	<10
--------------------	-------------	-------------------	-----



IMPORTANT: The information contained in this document is valid from 01/11/2019 and is subject to change at any time without notice. In the context of constantly changing technology, our customers are responsible, prior to any use, for checking with us that this document is the version in force.

#### CREATION, NO FORMALDEHYDE, BETTER INDOOR AIR QUALITY



**COMPOSITION**  
100% REACH  
Phthalate Free  
(except recycled content)



**INDOOR AIR QUALITY**  
TVOC below detection level  
No Formaldehyde emission



**RECYCLABILITY**  
100%



**RECYCLED CONTENT**  
35%



**WELLNESS**  
Walking noise: 73dB

#### Distributed by:

Gradus Carpets, Park Green, Macclesfield, Cheshire, SK11 7LZ, UK  
Tel: 01625 859000

**Gerflor**  
theflooringgroup